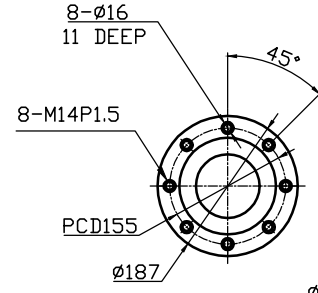
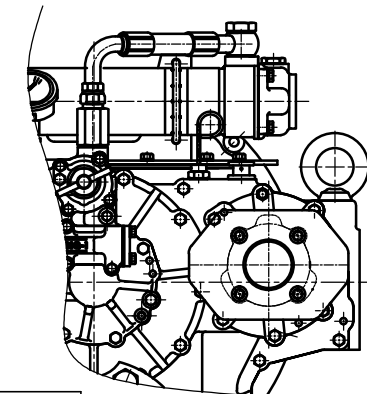
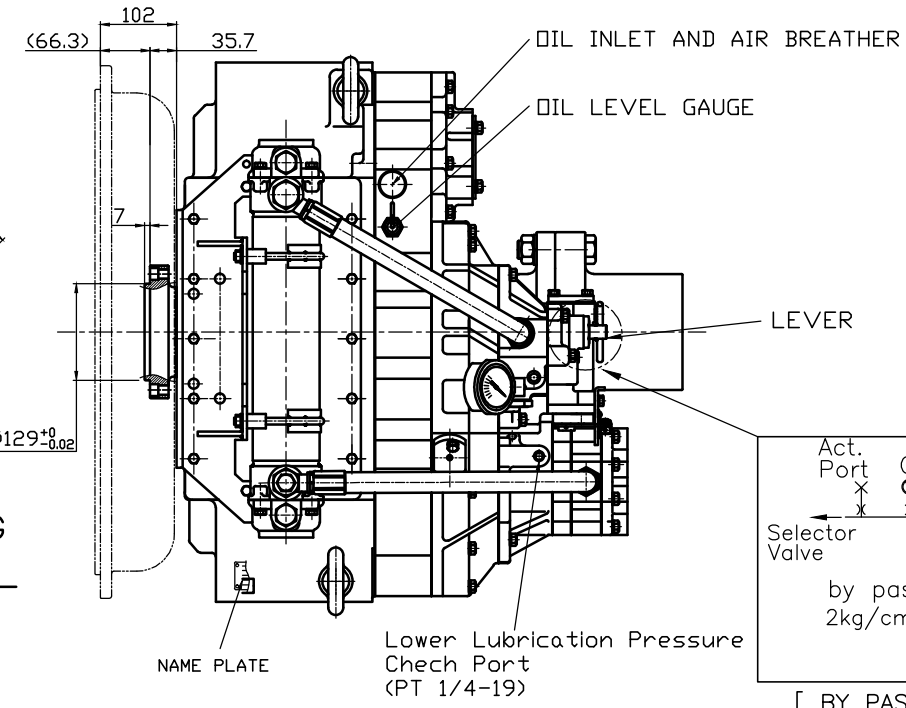


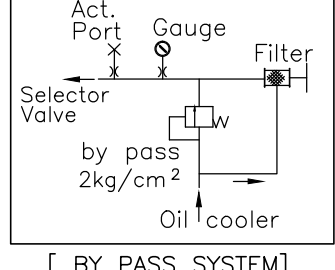
OUTPUT SHAFT COUPLING & PROPELLER COUPLING DIMENSION



INPUT COUPLING DIMENSION

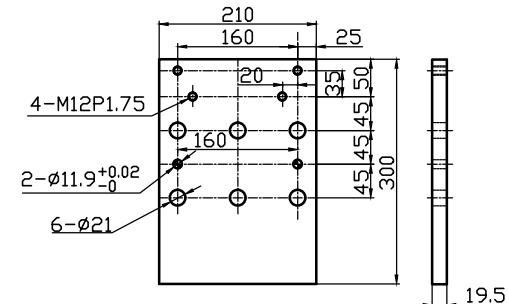
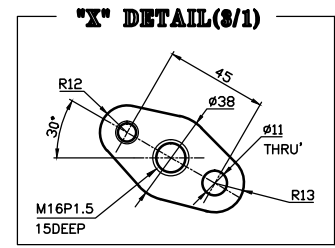
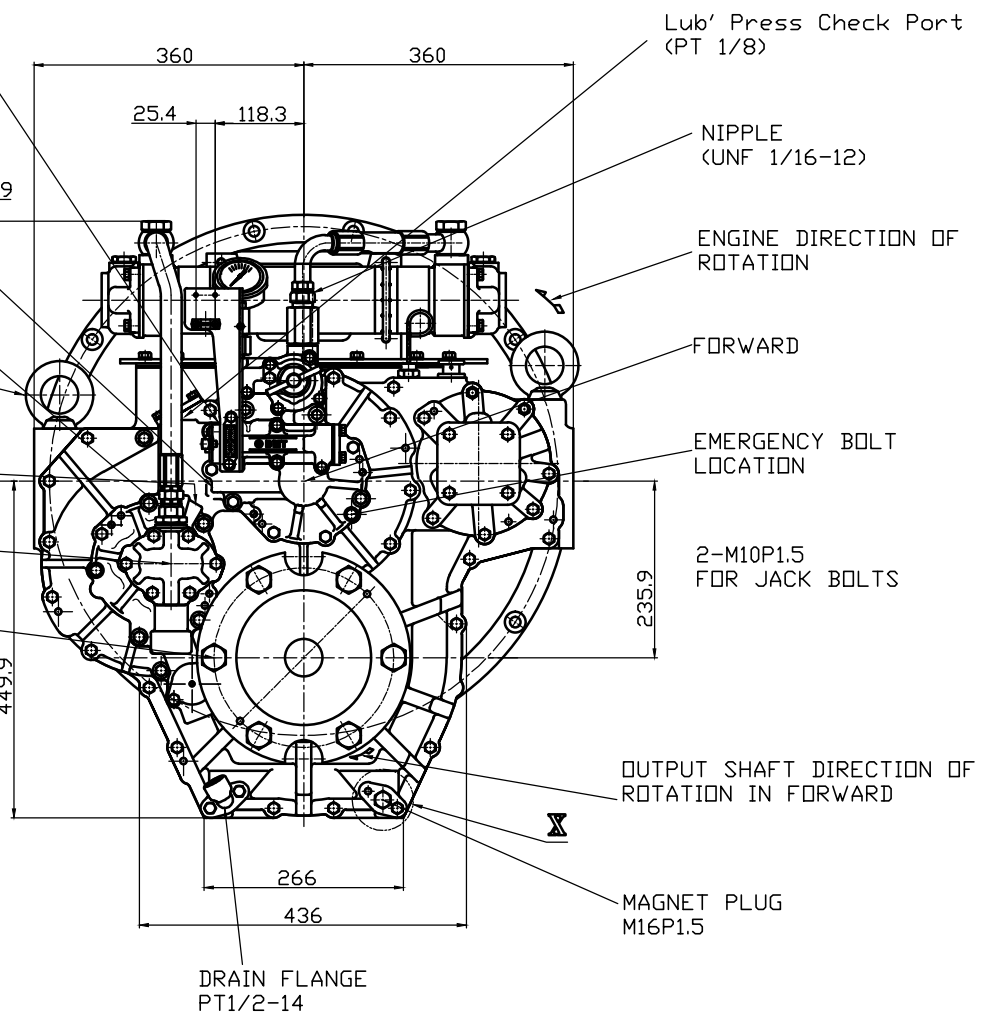
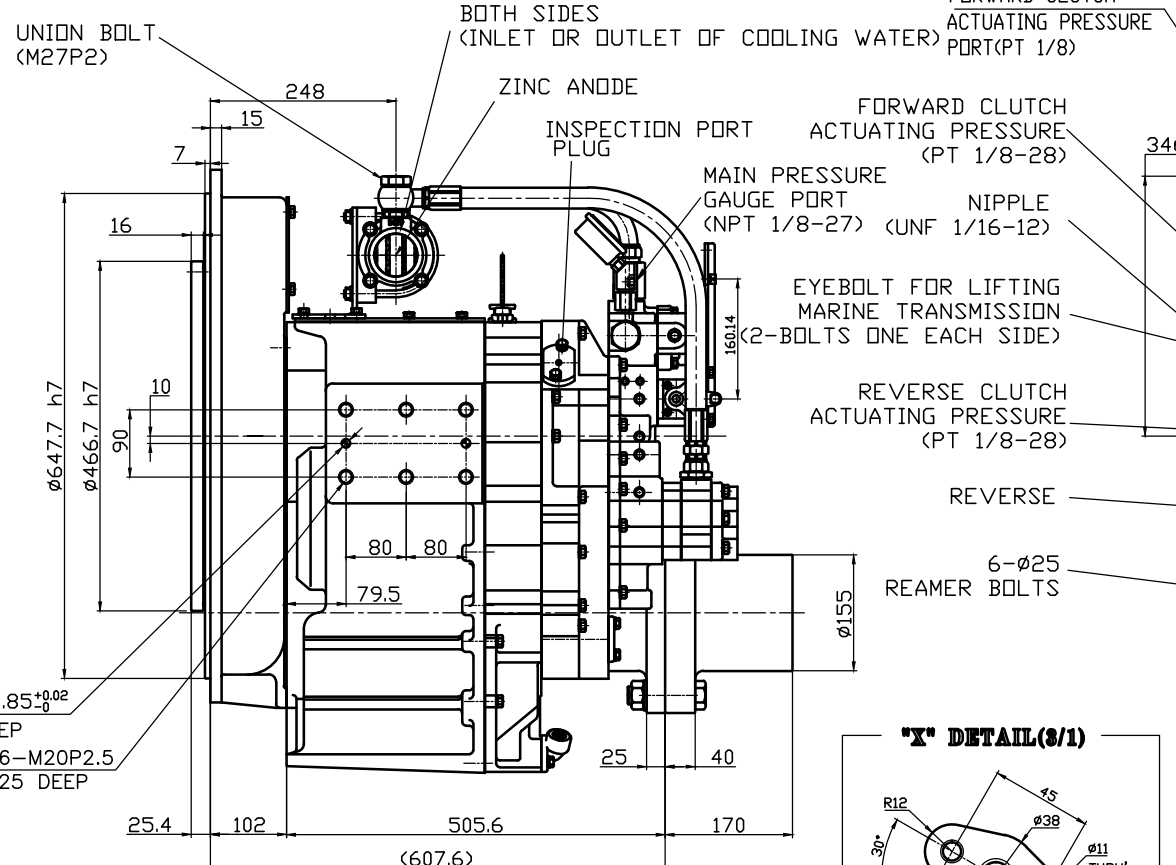
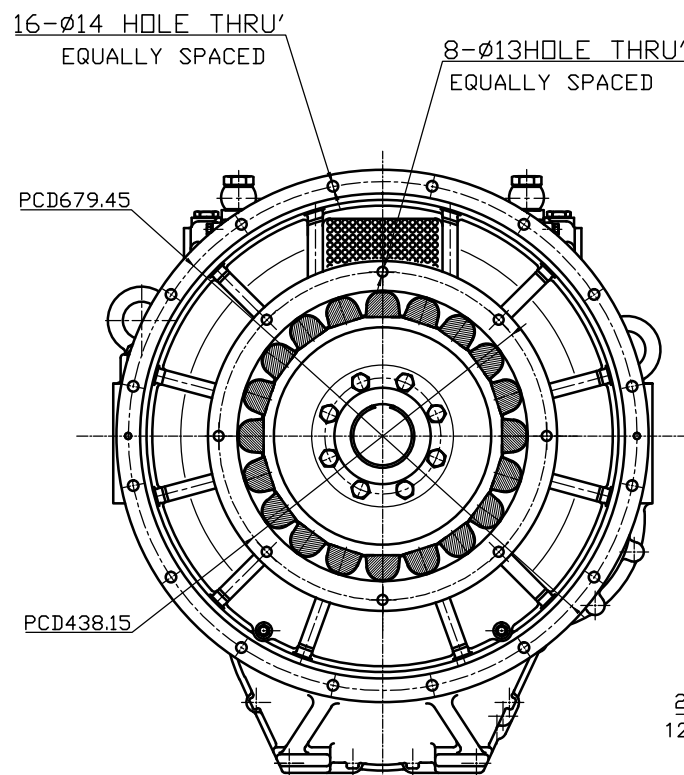


P.T.O ATTACHED



[BY PASS SYSTEM]

DMT400H MARINE TRANSMISSION SPECIFICATION	
GEAR RATIO	1.43, 1.72, 2.03, 2.46, 2.75
TOTAL WEIGHT	APPROX. 660 Kg(DRY)
OIL CAPACITY	APPROX. 9 L
OIL VISCOSITY	SAE # 30
OIL PRESSURE	1.96 ~ 2.54 MPa CLUTCH OIL
DIRECTION OF ROTATION IN FORWARD	INPUT C.C.W VIEWED FROM THE STERN OUTPUT C.W VIEWED FROM THE STERN
OIL CHANGE INTERVAL	THE FIRST 100HOURS OF INITIAL OPERATION AND EVERY 1000HOURS THEREAFTER
SHIFTING LIMIT	UNDER 50% OF THE RATED ENGINE SPEED
OIL COOLER	WATER FLOW 40 ~ 60 L/m TEMPERATURE OF COOLING WATER MAX 32°C
OPERATING TORQUE OF SHIFTING LEVER	UNDER 2.94Nm



BRACKET DIMENSION

- REMARK
- HOUSING : SAE# 0
 - DRIVING RING : SAE 14"
 - COULING TYPE : RUBBER

公差	TOLERANCE ON	번호	PART NO.	명	PART NAME	개수	제	필	규	비	고
분수	소수	각도			SCALE	형	적	격	크	고	고
±	±	±			N/S	식	질	치	기	도	도
±	±	±				DMT400H					원도
MATERIAL											
DATE 2012.05.10											
APPROVED BY JK.Kim											
CHECKED BY KS.Han											
DRAWN KC.Yoon											
DESIGNED											
NAME MARINE TRANSMISSION											
DWG. NO. 40000GA~E-014RC											
REV. 000											
D-I INDUSTRIAL											
SIZE A 3											
CODE ID. NO.											