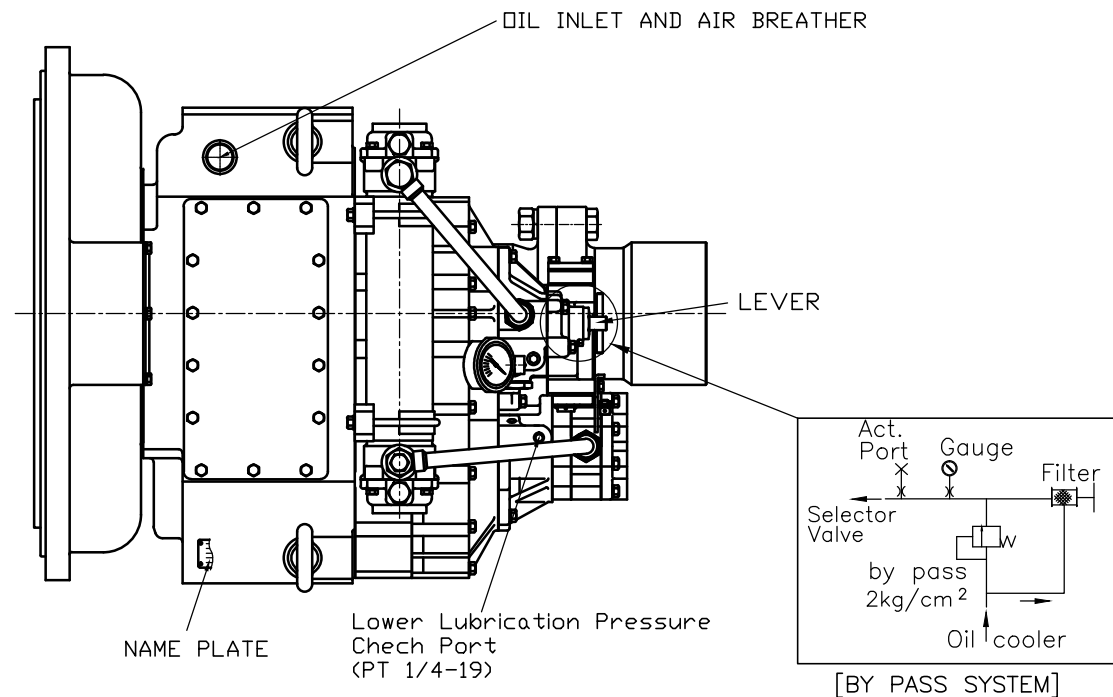
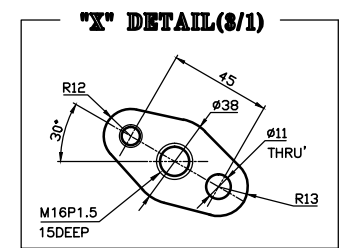
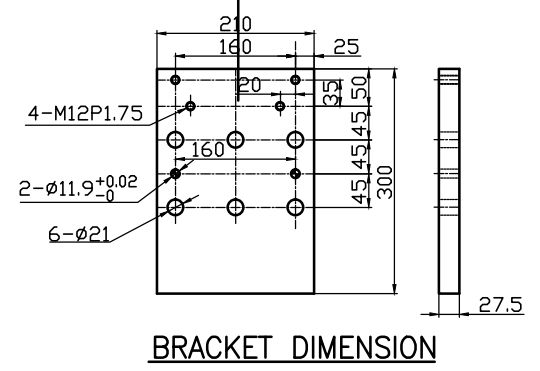
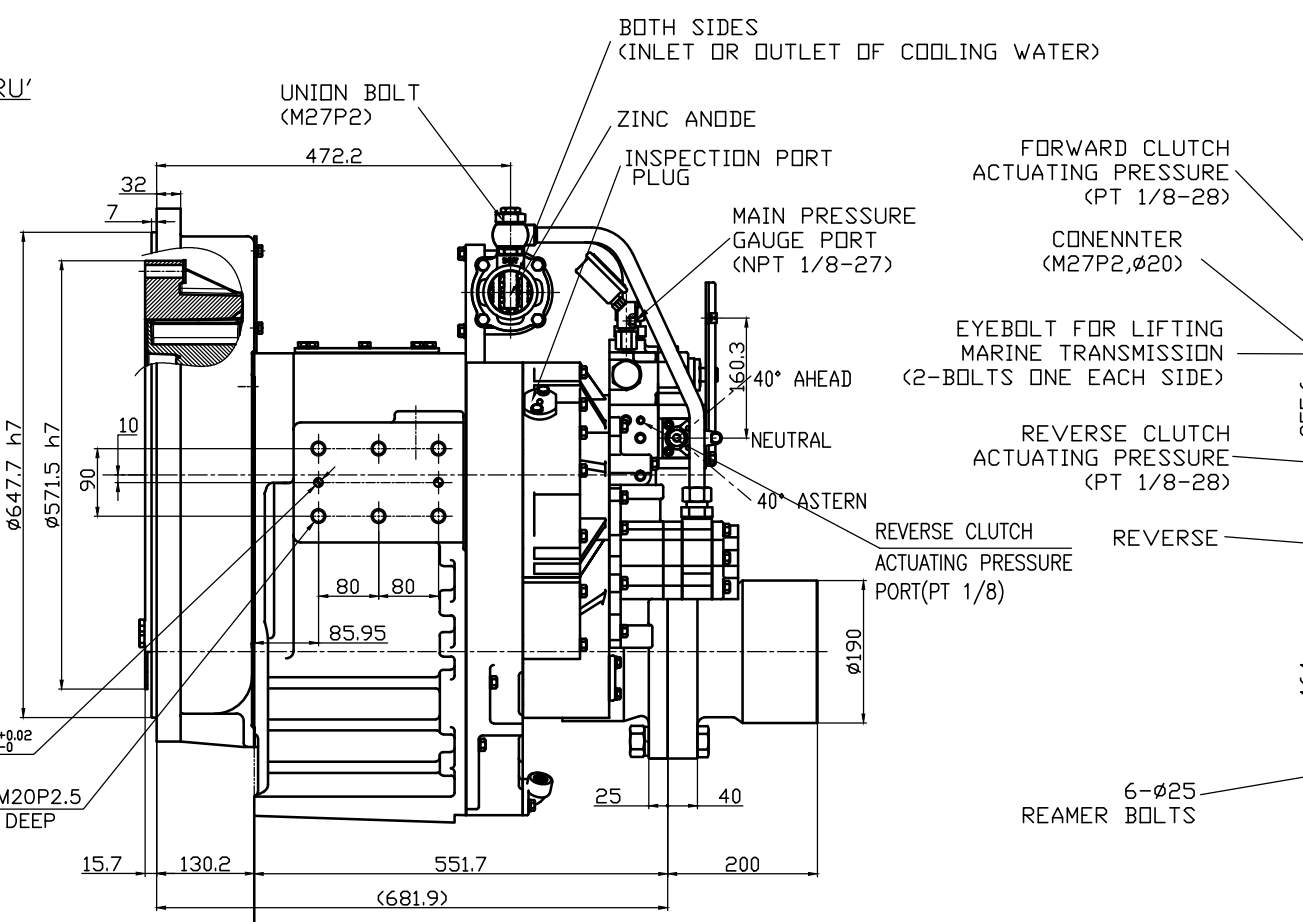
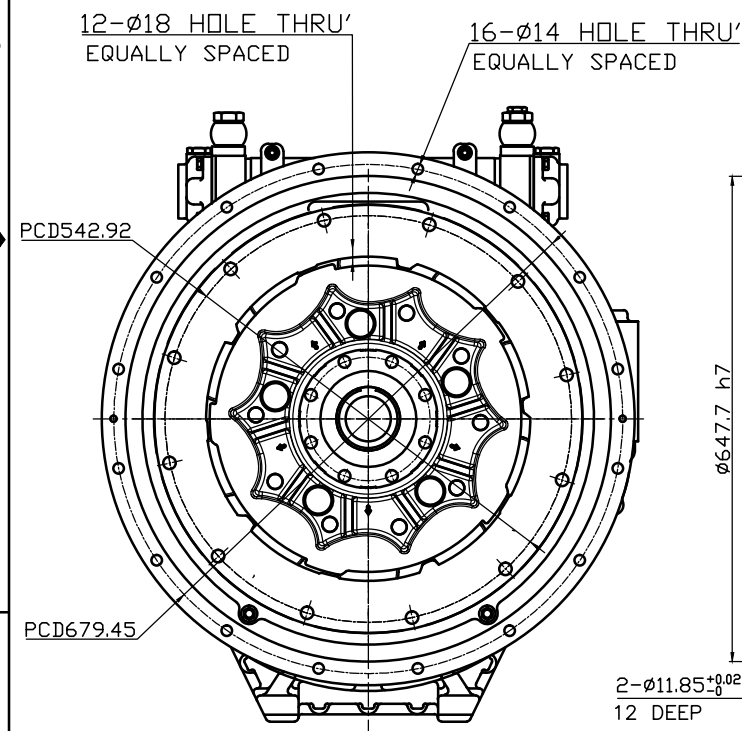


OUTPUT SHAFT COUPLING & PROPELLER COUPLING DIMENSION



DMT550H MARINE TRANSMISSION SPECIFICATION	
GEAR RATIO	1.43, 1.64, 1.81, 2.03, 2.33, 2.60, 2.91
TOTAL WEIGHT	APPROX. 660kg(DRY)
OIL CAPACITY	APPROX. 9L
OIL VISCOSITY	SAE #30
OIL PRESSURE	1.96 ~ 2.54 MPa CLUTCH OIL
DIRECTION OF ROTATION	INPUT C.C.W VIEWED FROM THE STERN OUTPUT C.W VIEWED FROM THE STERN
OIL CHANGE INTERVAL	THE FIRST 100HOURS OF INITIAL OPERATION AND EVERY 1000HOURS THEREAFTER
SHIFTING LIMIT	UNDER 50% OF THE RATED ENGINE SPEED
OIL COOLER	WATER FLOW 90 ~ 120 L/m TEMPERATURE OF COOLING WATER MAX 32°C
OPERATING TORQUE OF SHIFTING LEVER	UNDER 2.94Nm



REMARK
 1.HOUSING : SAE# 0
 2.DRIVING RING : SAE 18"
 3.COULING TYPE
 CENTA Flex Coupling (77520802)

公差表 TOLERANCE ON				번호 NO.	품 PART NO.	품 PART NAME	개수 QTY	재 MATERIAL	규 SIZE	비 REMARKS
분수 FRACTIONS	소수 DECIMALS	각도 ANGLES	公差 TOLERANCE							
±	±	±	±							
1초과 4 이하	±0.3	±0.1	±0.05							
4	±0.5	±0.2	±0.07							
16	±0.7	±0.3	±0.1							
63	±1.2	±0.5	±0.2							
250	±2.0	±0.8	±0.3							

제 MATERIAL	작성 DATE 2015.12.11	척도 SCALE N/S	형 식 TYPE DMT550H
승 인 APPROVED BY JK.Kim	검 토 CHECKED BY TH.Cha	제 도 DRAWN CH.Baek	품 명 NAME MARINE TRANSMISSION
도 번호 DWG. NO. 50000GA~G-018CTH			개 정 (REV.) 000
크 기 SIZE A3		코 드 번호 CODE ID. NO.	